

Photography



What you should already

- Use a digital camera to take a specific image portrait/landscape.
- Use a graphics package or app to explore digital image creation.
- Have the opportunity to manipulate an image using various digital tools.

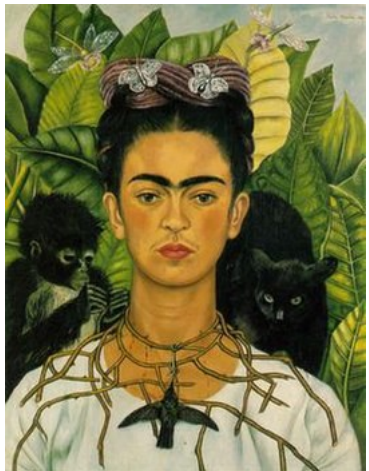


Key Artist- Frida Kahlo

- Born in Mexico on 6 July 1907
- Died 13 July 1954
- Her father was a German photographer.
- Frida caught polio when she was six years old and was ill for nine months.
- Frida almost always wore traditional Tehuana Mexican clothes.
- Frida was involved in a serious bus accident in 1925 when she was 18. She was seriously injured and had to stay in bed for three months.
- Frida painted many self-portraits in bed using a special easel and mirror her parents set up for her.
- She married the artist Diego Rivera in 1929 when Frida was 22.
- Frida painted 143 brightly coloured paintings. She often painted herself with or as animals, plants and buildings.
- Her paintings often showed events that were happening in her life.
- In 1938, Frida held her first solo art show in New York and sold 12 paintings.
- She became the first Mexican artist to sell a painting to the world famous Louvre museum in Paris in 1939.
- Frida was sickly her whole life because of what happened to her as a child. She arrived in an ambulance for her only art show in Mexico in 1953 and then sat in a bed to talk to guests.

Key Artwork- Self portrait with thorn necklace and hummingbird

- Painted in 1940
- Oil on canvas
- Kahlo had a pet spider monkey, given to her by her ex husband.
- The thorn necklace could represent Jesus.
- The first painting she painted after her divorce.
- It was painted during a time where she had to have lots of operations and she was in a lot of pain.
- Kahlo said, "I paint myself because I am so often alone, because I am the subject I know best."
- The dead hummingbird which hangs around her neck is considered a good luck charm for falling in love in Mexican folklore.



Key Vocabulary

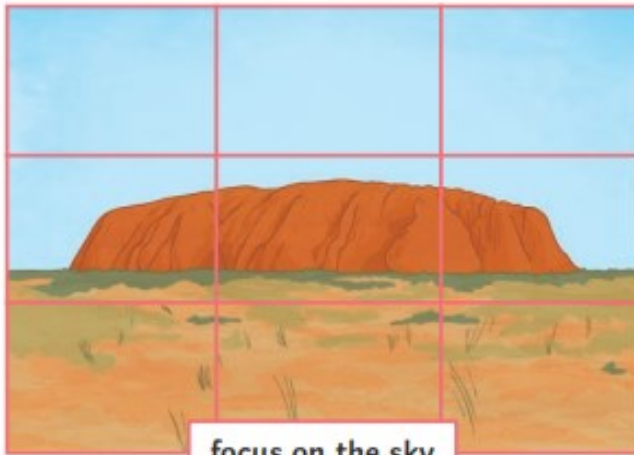
<p>Portrait- Typically features people or objects looking toward the camera</p>	<p>Focus- The sharpest area of the image. It is the area where the lens works to highlight an object, a person, or a situation.</p>
<p>Landscape- Typically features the camera looking out from a scene.</p>	<p>Background- The background is the part of the overall scene. It's behind the main subject of the photograph</p>
<p>Self portrait- When the artist depicts his or her self-image.</p>	<p>Composition- How a photographer arranges visual elements within their frame.</p>
<p>Crop- "To trim" or "cut back". It is used to trim off the outside edges of a digital image</p>	<p>Digital- The process of using electronic and computing appliances to capture, create, edit and share digital images/ photographs.</p>
<p>Alter- The transformation of a photograph</p>	<p>Subject- The subject of that photo is what the image is actually about.</p>

Key skills:

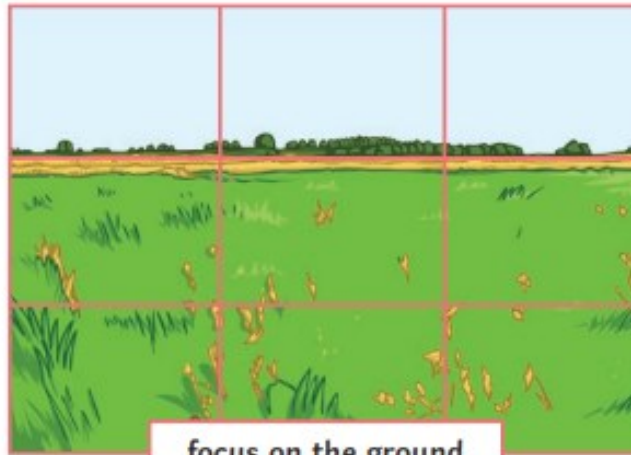
The Rule of Thirds

When using the rule of thirds in photography, the image is divided into thirds using two horizontal lines and two vertical lines.

To create an eye catching composition, the subject matter is positioned according to the lines. For example, when the horizon is photographed near to the top third line, the focus for the viewer is drawn to the ground; when the horizon is near to the bottom third line, the sky is the focal point of the image.



focus on the sky



focus on the ground



Points of view:

Many photographs are often taken from the eye level of the viewer; however different viewpoints can add interest to the image.

Shoot from the hip: Shooting the subject matter 'from the hip' or a mid point can make the image look as though it is unplanned.

High angle shots: Shooting the subject matter from above or high up can give a vulnerable feel to the image and the subject matter.

Low angle shots: Shooting the subject matter from below or low down can make the subject matter look powerful and very dominant.

Portrait and landscape

Landscape and Portrait are the types of orientation of a photograph. The main difference between landscape and portrait image orientation is that a landscape image is wider than it is taller while a portrait image is taller than it is wider. In other words, Landscape images are captured in a horizontal layout while portrait images are captured in a vertical layout.

