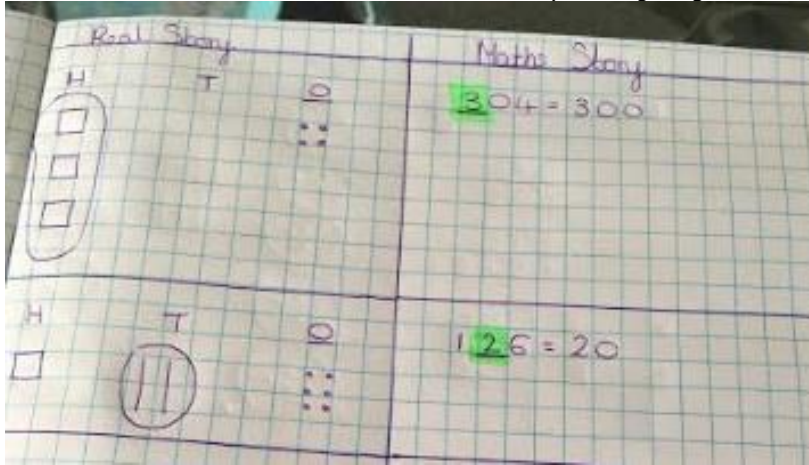


## LF: Place Value

Example: This is an example if you need to refer to it.



Try it:

How much is this digit worth?

1. 3 =
2. 8 =
3. 32 =
4. 49 =
5. 61 =
6. 90 =

Use it:

1. Which box shows the correct value of the underlined digit?

21

- 2      20      200  
 A       B       C

2. Match the correct values to the correct **bold** digits.

**32**

**3**

**23**

**33**

three tens

three ones

3. Mary's number has 2 tens and five ones. What number should Mary write?

4. Billy's number has 7 tens and seven ones. What number should Billy write?

Prove it:

1. Becky says the 8 in 38 is worth 80.

Correct or incorrect?

How do you know?

2. Zoe thinks the 6 in 63 is worth 6.

Correct or incorrect?

How do you know?